



Environment

We believe community wisdom and innovation, combined with courageous choices, can restore ecosystem health and relationships between people and their environments. Stemming from this, we prioritize transformational approaches that center those most affected by current social, economic, and environmental disparities. To advance action, we invest in creative, collaborative, and sometimes disruptive efforts to redefine and mobilize human, social, and financial capital toward equitable systems change.

What's at Stake: The Issues

The "Environment" is a complex collection of elements and conditions. Multiple issues are deeply connected to each other and also relate to social systems that can make their impact even more extreme for some. Seeing the issues as an interconnected challenge is critical to addressing them from the ground up.

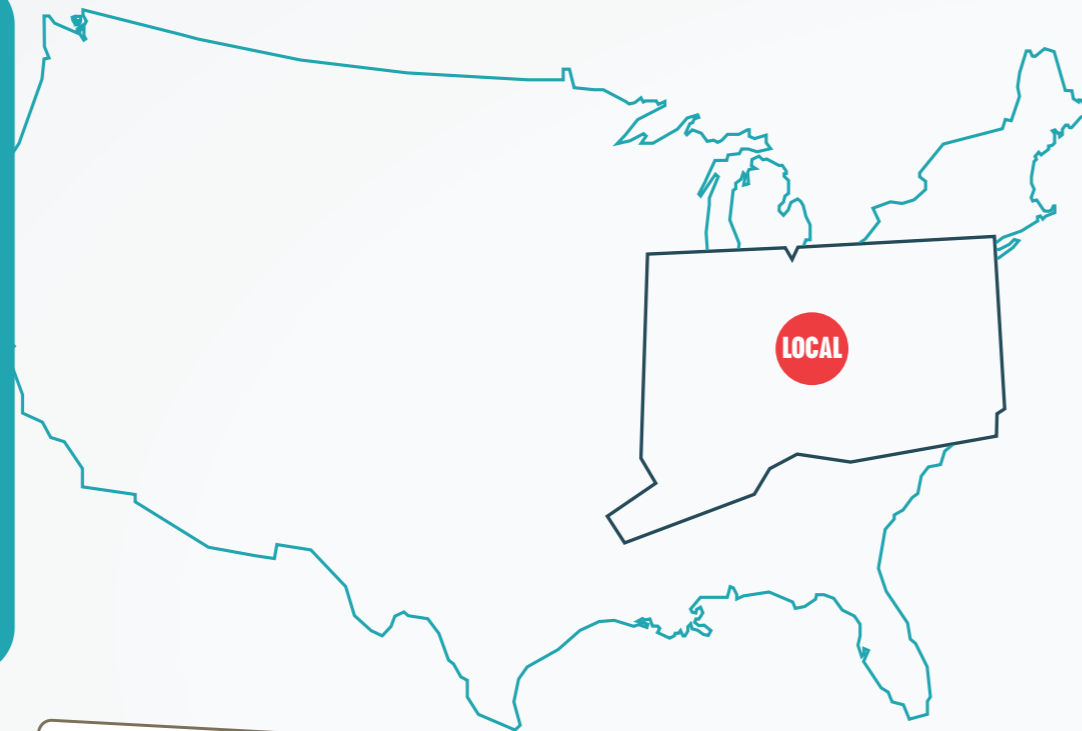


Our Systems Change Point of View

Community to community, we are mobilizing for sustainable development. The complex interconnections might look a little different in each location, yet we have lots to learn from each other's work. Shared information will help everyone make better and better decisions – and, if we center equity, the interdependent solutions can draw strength from each other and roll-up into collective benefits.

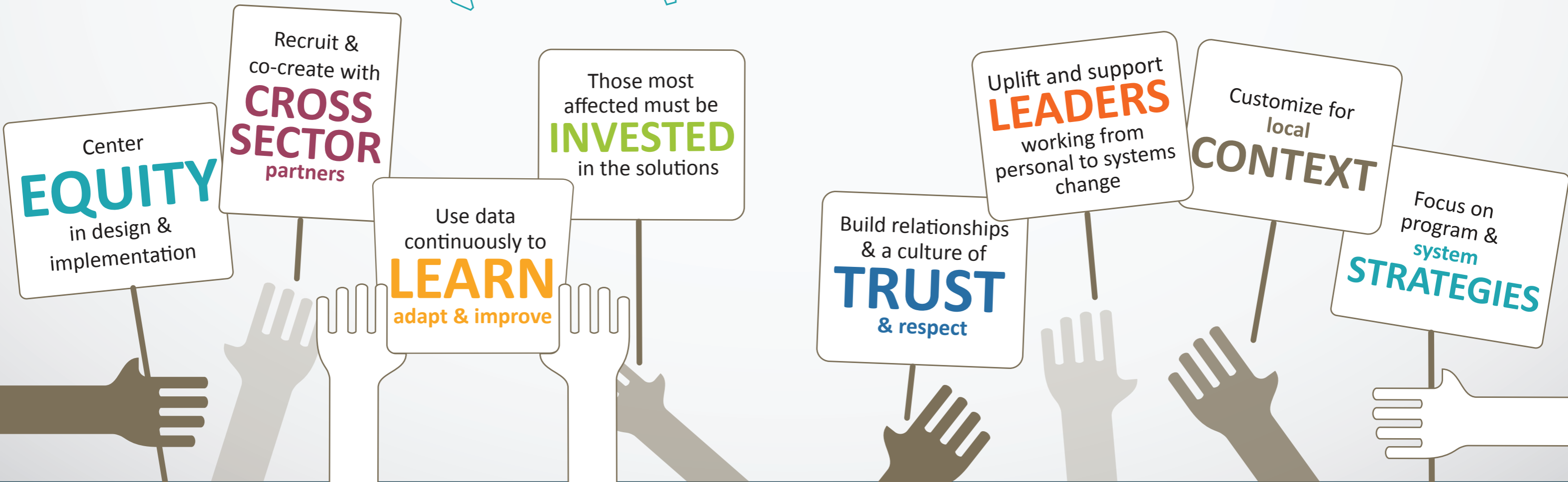
From local communities, to the state and national level, change happens in interconnected ways.

“The most effective, meaningful, long-lasting change is led by people in their own communities.”
—Erin Barnes, ioby



Our Approach

There are multiple catalysts that make the best foundation for communities to identify their own needs and create effective roadmaps.



It Takes a Community: Highlights

Sustainable CT



Local Actions. Statewide Impact.

Sustainable CT provides a roadmap for communities to making strides in and across these baseline areas: Transportation, Physical Infrastructure & Operations, Public Services, Planning, Land & Natural Resources, Local Economies, Housing and Cultural Ecosystems.

“Municipal leaders and residents embrace the Sustainable CT platform to guide and support them in realizing the collective vision for their communities. We are inspired by the stories of deeper community engagement, inclusion, and change at the local level from Sustainable CT communities.” - Lynn Stoddard, Executive Director, Sustainable CT

SUSTAINABLE STATES network



Shared Vision. Local Impact.

The 12 state Network enables members to exchange information, foster the development and success of local government sustainability initiatives, share resources and best practices, and work together to demonstrate positive impact. Solutions are a better fit with community engagement.

“Together our statewide local program members are supporting over 1900 communities to take action on climate and sustainability while addressing the interconnectedness of local issues. We are building a national movement to drive collective progress on climate, resilience, and sustainability” - Lola Schoenrich, Network Coordinator, Sustainable States Network

Sustainable CT



COMMUNITY MATCH FUND

Through the partnership with ioby, the crowdfunding platform, any one from an enrolled Sustainable CT town can put forth a local project based on a \$1:\$1 matching scenario. In this model, local leaders get fundraising support and help developing their ideas and their town gains Sustainable CT points.

“The Community Match Fund is an open call for good ideas around sustainability actions. As town certification is happening, this innovative funding model has an added benefit of connecting engaged residents with leaders in local government, and strengthening civic infrastructure well beyond just one project.” - Abe Hilding-Salorio, Community Outreach Manager, Sustainable CT

Sustainable CT



EQUITY SUPPORTS

The Equity Supports are a comprehensive way to talk about Sustainable CT’s approach to optimizing for equity. Elected officials and other municipal staff attend equity trainings, work with the Equity Toolkit, are trained and are able to receive just in time Equity Coaching services.

“There are opportunities here for all municipalities in the state to think about and get direct support for ensuring issues and practices of equity are included at every step decision point. The work shows up in the planning, design and implementation of projects and/or processes.” - Isa Mujahid, Equity Coach, Sustainable CT



Tremaine Foundation

The Emily Hall Tremaine Foundation seeks and funds innovative projects that advance solutions to basic and enduring problems.

www.tremainefoundation.org

Environment